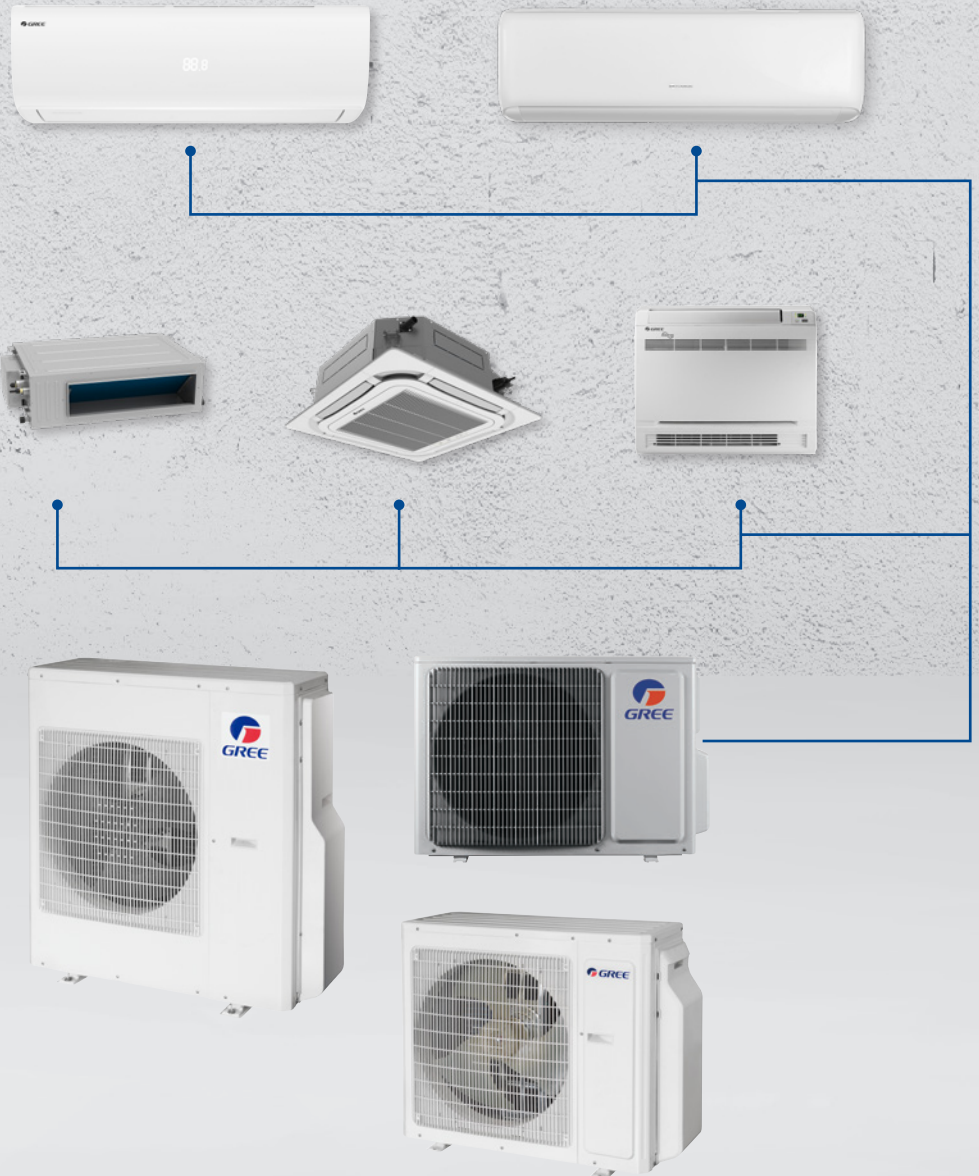


# *Free Match Multi Split System*



# Gree Free Match Multi Explanation

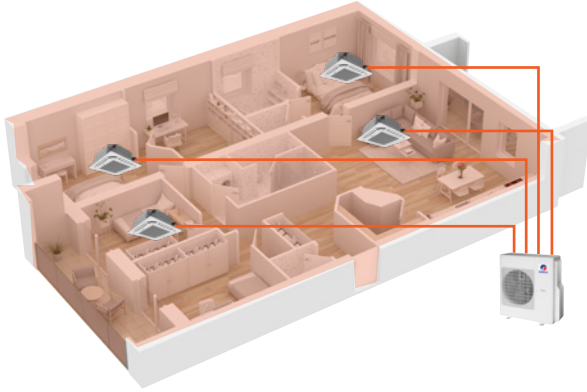
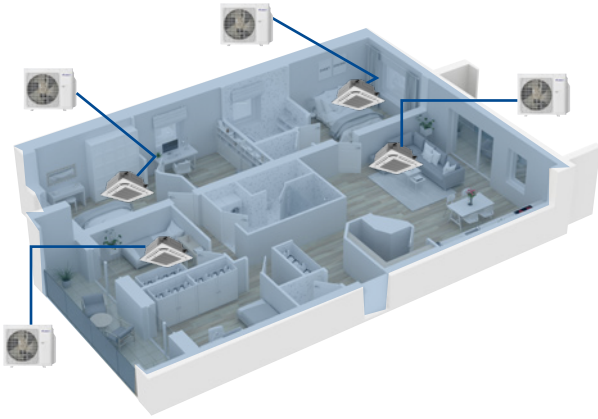
## Gree Free Match Multi Explanation

As the name suggests, you are free to mix and match a number of units and unit types, depending on the space or budget.

The Gree Free Match system allows you to connect up to 5 indoor units to a single outdoor unit.

The indoor units can be different types and or capacities which means you can customize your heating and cooling needs specifically for your home or office.

This allows you complete temperature control over your entire home or office environment, which gives increased comfort and greater efficiency.

Free Match	Residential AC
1 outdoor unit can connect up to 5 indoor units.	1 outdoor unit can connect 1 indoor unit only.
Cost-saving for installation.	High cost for installation.
Wide range & types of indoor units can be selected by users.	Limited types of indoor units can be selected by users.
Space-saving for outdoor unit placement.	Affect the appearance of the whole building with too many outdoor units.
High efficiency for centralised control of all indoor units.	Low efficiency for the individual control of different indoor units.
	

## R32 Refrigerant

Gree's new Free Match range replaces the R410A refrigerant currently used with the more efficient and lower environment impacting refrigerant: R32.

R32 refrigerant has an ozone depletion level of zero and its global warming potential is 677, which is 1/3 that of R410A at 2088.

Not only does R32 have less impact on global warming, it is also 8% more efficient than R410A. This means a smaller refrigerant charge is required, further decreasing the units carbon emission ratio.

# Free Match Flexibility

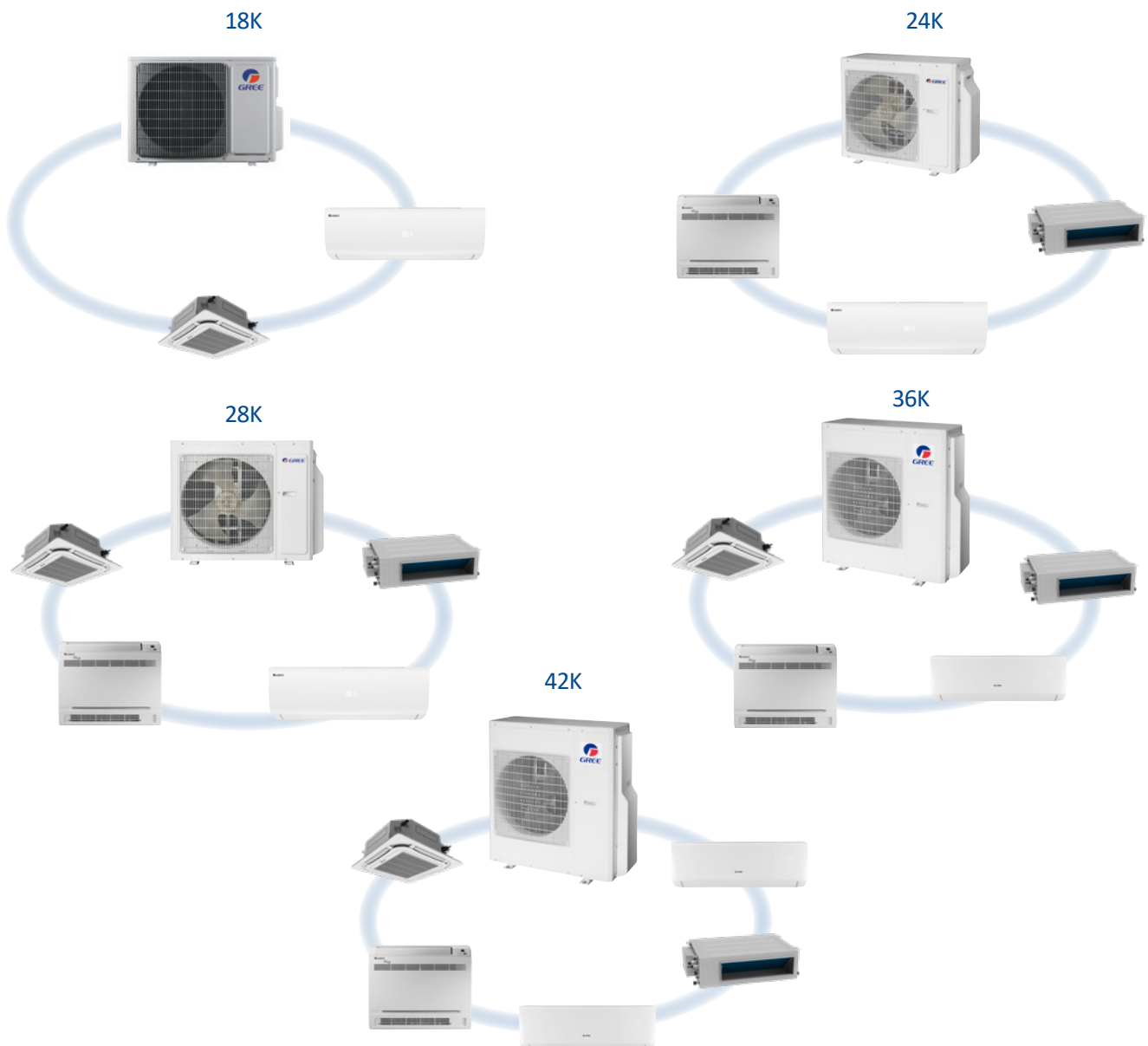
## *Gree Free Match Flexibility*

Gree Free Match does what its name suggests, giving the customer the flexibility to use different types and sizes of air conditioners, perfectly matched to the space.

Gree Free Match outdoor units are designed with redundancy in mind, during typical use, not all rooms will need to be heated or cooled at the same time or rate, thus excess capacity is created.

Gree Free Match can be connected to 50% more capacity of the indoor unit when compared with the outdoor unit. As each room is individually controlled, this gives maximum control over temperature and air flow thus creating greater comfort.

## *Free Match Combinations*



# Free Match Control Options

## Gree Free Match Control Options

- Gree Free Match units can be connected to a range of indoor units. This allows a wide range of control options to be used.
- All hi-walls, cassettes and floor consoles come with a standard wireless remote controller.
- Ducted units come standard with a wired wall controller and these can also be fitted to the other units.
- Wi-Fi comes as standard on the hi-walls and floor console units.
- Through the wired wall controllers a central controller can also be fitted.



### YAP1F7 (WiFi)

- Pular Standard
- I Feel
- Turbo
- X fan
- Light
- Colasma



### XK76

Optional wired wall controller for all hi-walls and mini floor console.



### YAG1F

- Hyper Standard
- I Feel
- Turbo
- X fan
- Light
- Adjustable Auto



### XK46

Standard wired wall controller with all Bulkhead units.



### CE52-24/F(C)

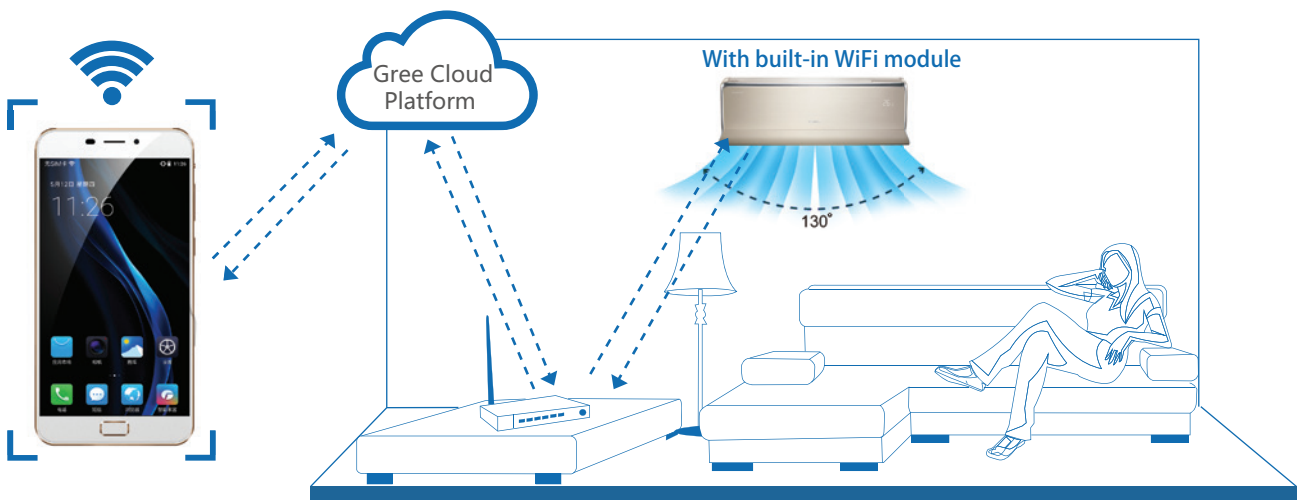
Central Controller.

# Wi-Fi Options Free Match Indoor Units

## Wi-Fi Options



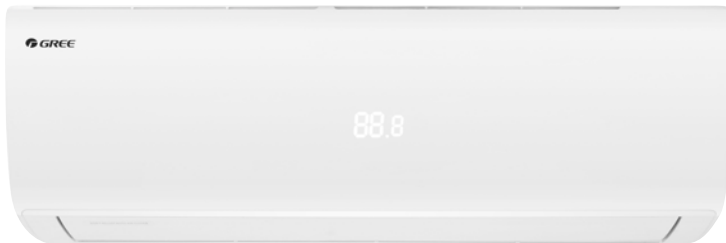
- Wi-Fi standard on Hyper, Pular, Alto and Mini Floor Console.
- Optional on Ducted and Cassette.
- Download the Gree+ app on iphone or android from the app store.



## Scan QR Code & Download Gree+ APP



# Hyper+AI Free Match Hi-wall Indoor Units



XK76 (Optional)

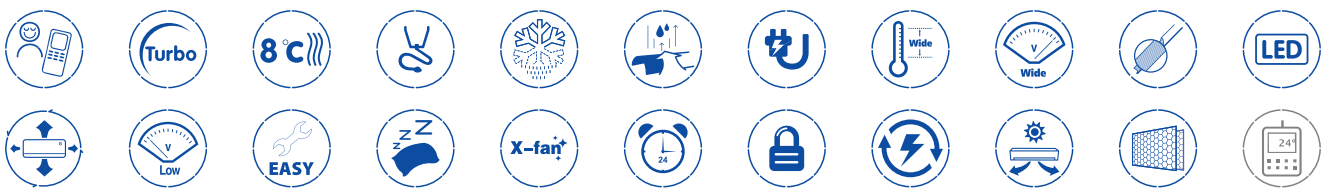


YAG1F

With a modern, sleek finish and some of the highest energy efficiency ratings on the market, the Gree Hyper+ AI range not only looks great, but it also costs significantly less to run.



## Hyper Features



Series	Hyper+ AI						
Indoor Model No.	GWH09ABAXD -K6DNC8A-I	GWH12ABAXD -K6DNC8A-I	GWH15QDXE -K6DNC8B-I	GWH18QEXF -K6DNC8A-I	GWH21QEXF -K6DNC8A-I	GWH24QEXF -K6DNC8A-I	
Performance							
Cooling Capacity	kW	2.55	3.5	4.6	5.2	6.3	7.1
Heating Capacity	kW	3.25	4.0	4.7	5.6	7.4	8.0
Dehumidifying Volume	l/s	0.8	1.4	1.8	1.8	2.5	2.4
Air flow	m <sup>3</sup> /h	208 ~ 75	255 ~ 83	263 ~ 144	347 ~ 222	361 ~ 222	361 ~ 180
Sound Pressure	dB (A)	21 ~ 40	23 ~ 45	24 ~ 48	33 ~ 45	29 ~ 49	32 ~ 50
Sound Power	dB (A)	38 ~ 56	38 ~ 60	39 ~ 63	51 ~ 63	41 ~ 62	48 ~ 77
Indoor T° set-point range	°C	+16~+30	+16~+30	+16~+30	+16~+30	+16~+30	+16~+30
Electrical							
Power Supply (From Outdoor)	V/P/Hz	220~240 / 1 / 50					
Power / Communication Cable	m	4 x 1.5	4 x 1.5	4 x 1.5	4 x 1.5	4 x 1.5	4 x 1.5
Dimensions and Weights							
Product Length / Height / Depth	mm	798 x 295 x 222	798 x 295 x 222	970 x 300 x 224	1078 x 325 x 246	1075 x 333 x 246	1078 x 325 x 246
Net / gross weight	kg	10	10.5	13.5	15.5	16	16
Installation							
Refrigeration connections	Liquid	6.35 (1/4")	6.35 (1/4")	6.35 (1/4")	6.35 (1/4")	6.35 (1/4")	6.35 (1/4")
	Gas	9.52 (3/8")	9.52 (3/8")	12.7 (1/2")	12.7 (1/2")	12.7 (1/2")	15.88 (5/8")
Drain Connection	mm	16	16	16	16	16	16

# Pular Free Match Hi-wall Indoor Units



XK76 (Optional)

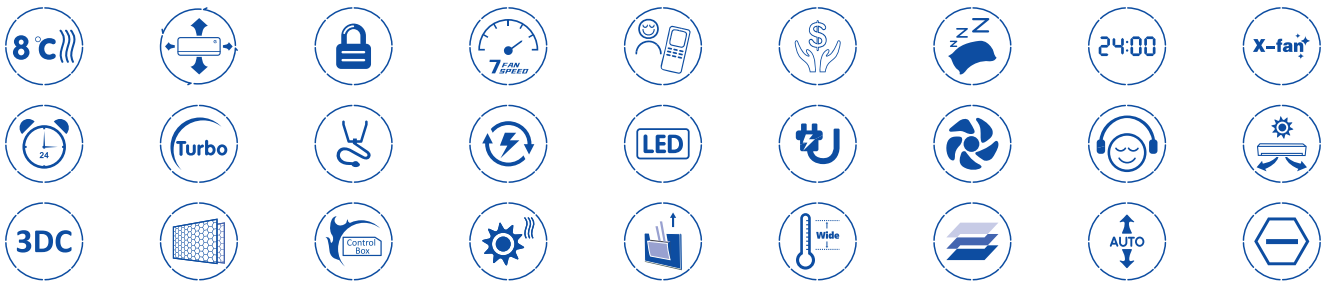


YAP1F7 (WiFi)

The Gree Pular range of hi-wall indoor units brings a sleek contemporary look to your home. The Pular indoors feature Gree's latest technology, reliability and performance.



## Pular Features



Series	Pular						
Indoor Model No.	GWH07AGAXB -K6DNA1A-I	GWH09AGCXB -K6DNA1A-I	GWH12AGCXD -K6DNA1A-I	GWH18AGDXD -K6DNA1A-I	GWH21AGEXF -K6DNA1A-I	GWH24AGEXF -K6DNA1A-I	
Performance							
Cooling Capacity	kW	2.25	2.65	3.5	5.0	6.3	7.1
Heating Capacity	kW	2.7	3.2	4.0	6.0	7.4	8.0
Dehumidifying Volume	l/s	0.6	0.8	1.4	1.8	2.5	2.4
Air flow (max)	l/sec	144	205	200	291	361	361
Sound Pressure (min/max)	dB (A)	22 ~ 39	20 ~ 42	24 ~ 44	27 ~ 46	29 ~ 49	32 ~ 50
Sound Power (min/max)	dB (A)	38 ~ 55	35 ~ 57	39 ~ 59	43 ~ 62	41 ~ 62	48 ~ 66
Indoor T ° set-point range	°C	+16 ~ +30	+16 ~ +30	+16 ~ +30	+16 ~ +30	+16 ~ +30	+16 ~ +30
Electrical							
Power Supply (From Outdoor)	V/P/Hz	220~240 / 50 / 1					
Control Wiring	qty/m	4 x 1.5					
Dimensions and Weights							
Indoor Dimensions (WxHxD)	mm	704 x 260 x 185	825 x 293 x 196	825 x 293 x 196	982 x 311 x 221	1075 x 333 x 246	1075 x 333 x 246
Indoor Net Weight	kg	7.5	9.5	9.5	13	16	16
Installation							
Pipe Connections mm (in)	Liquid	6.35 (1/4")	6.35 (1/4")	6.35 (1/4")	6.35 (1/4")	6.35 (1/4")	6.35 (1/4")
	Gas	9.52 (3/8")	9.52 (3/8")	9.52 (3/8")	12.7 (1/2")	12.7 (1/2")	15.88 (5/8")
Drain Connection	mm	16	16	16	16	16	16

# Alto Free Match Hi-wall Indoor Units



XK76 (Optional)



YAP1F7 (WiFi)

The Gree Alto range of hi-wall indoor units brings a sleek contemporary look to your home. The Alto indoors feature Gree's latest technology, reliability and performance.



## Alto Features



Series		Alto			
Indoor Model No.		GWH09ATBxB-K6DNA1C-I	GWH12ATCXB-K6DNA1B-I	GWH18ATDXD-K6DNA1C-I	GWH24ATEXF-K6DNA1E-I
Performance					
Cooling Capacity	kW	2.7	3.5	5.2	7.1
Heating Capacity	kW	3.0	3.7	5.8	7.8
Dehumidifying Volume	l/s	0.8	1.6	1.8	2.5
Air flow (max)	l/sec	152	183	278	375
Sound Pressure (min/max)	dB (A)	22 ~ 37	20 ~ 43	27 ~ 47	30 ~ 53
Sound Power (min/max)	dB (A)	36 ~ 56	34 ~ 60	40 ~ 60	45 ~ 68
Indoor T ° set-point range	°C	+16 ~ +30	+16 ~ +30	+16 ~ +30	+16 ~ +30
Electrical					
Power Supply (From Outdoor)	V/P/Hz	220~240 / 1 / 50			
Control Wiring	qty/m	4 x 1.5			
Dimensions and Weights					
Indoor Dimensions (WxHxD)	mm	783 x 260 x 185	835 x 275 x 200	943 x 333 x 246	1078 x 333 x 246
Indoor Net Weight	kg	8.0	8.5	13	15
Installation					
Pipe Connections mm (in)	Liquid	6.35 (1/4")	6.35 (1/4")	6.35 (1/4")	6.35 (1/4")
	Gas	9.52 (3/8")	9.52 (3/8")	12.7 (1/2")	12.7 (1/2")
Drain Connection	mm	16	16	16	16



# Mini Floor Console Free Match Indoor Units



XK76 (Optional)



YAG1F

The Gree floor console unit offers an alternate to the hi-wall style indoor units. The console can supply hot air from two discharge grilles providing the ultimate in heating comfort.

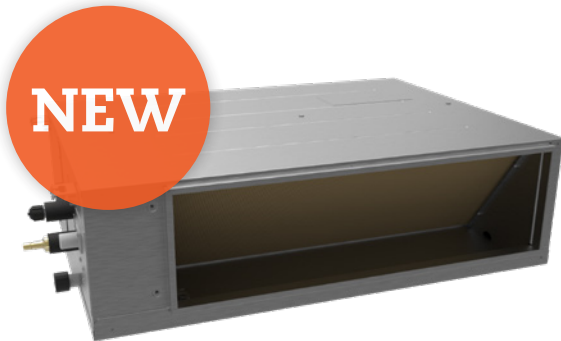


## Mini Floor Console Features



Series		Mini Floor Mount	
Indoor Model No.		GEH18AA-K6DNA1F-I	
Performance			
Cooling Capacity	kW	5.2	
Heating Capacity	kW	5.3	
Dehumidifying Volume	l/s	1.8	
Air flow	m <sup>3</sup> /h	194~89	
Sound Pressure	dB (A)	47~31	
Sound Power	dB (A)	57~41	
Indoor T ° set-point range	°C	+16~+30	
Electrical			
Power Supply (From Outdoor)	V/P/Hz	220~240 / 1 / 50	
Power / Communication Cable	qty/mm	4 x 1.0	
Dimensions and Weights			
Product Length / Height / Depth	mm	700 x 600 x 315	
Net / gross weight	kg	15.5	
Installation			
Refrigeration connections	Liquid	6.35 (1/4")	
	Gas	12.7 (1/2")	
Drain Connection	mm	16	

# Bulkhead Free Match Ducted Indoor Units



XK46

The Gree slim duct range of indoor units offers the ultimate in flexibility and discretion. Hidden from view in ceiling spaces these units are designed to supply conditioned air via a ceiling or wall diffuser.



(Optional)

## Bulkhead Medium Static Features



Series	Bulkhead Ducted				
Indoor Model No.	GFH(09)CA-K6DNA1B/I	GFH(12)CA-K6DNA1B/I	GFH(18)CB-K6DNA1B/I	GFH(24)CC-K6DNA1B/I	
Performance					
Cooling Capacity	kW	2.65	3.5	5.0	7.0
Heating Capacity	kW	2.8	4.0	5.5	8.0
Dehumidifying Volume	l/s	0.8	1.4	1.8	2.5
Air flow	l/s	194	180	244	416
Static Pressure	Pa	60	60	60	125
Sound Pressure	dB (A)	34 ~ 41	32 ~ 39	34 ~ 41	36 ~ 45
Sound Power	dB (A)	50 ~ 57	48 ~ 55	50 ~ 57	53 ~ 62
Indoor T ° set-point range	°C	+16 ~ +30	+16 ~ +30	+16 ~ +30	+16 ~ +30
Electrical					
Power Supply (From Outdoor)	V/P/Hz	220~240 / 1 / 50			
Power / Communication Cable	qty/mm	4 x 0.75	4 x 0.75	4 x 0.75	4 x 0.75
Dimensions and Weights					
Product Length / Height / Depth	mm	710x450x200	710x450x200	1010x450x200	900 x 655 x 255
Net / gross weight	kg	18.5	19	25	31
Installation					
Refrigeration connections	Liquid	6.35 (1/4")	6.35 (1/4")	6.35 (1/4")	9.52 (3/8")
	Gas	9.52 (3/8")	9.52 (3/8")	12.7 (1/2")	15.88 (5/8")
Drain Connection	mm	20	20	20	20

# Compact Cassette Free Match Indoor Units



XK76



YAG1F

The Gree cassette range of indoor units offers a compact design for easy installation. A strong and balanced airflow, with advanced protection functions and an intelligent drainage device.



(Optional)

## Cassette Features



Series		Cassette		
Indoor Model No.		GKH(12)BB-K6DNA3A/I	GKH(18)BB-K6DNA3A/I	GKH(24)BC-K6DNA4A/I
Performance				
Cooling Capacity	kW	3.5	4.5	7.1
Heating Capacity	kW	4	5	8
Dehumidifying Volume	l/s	-	-	-
Air flow	m <sup>3</sup> /h	650	710	1280
Sound Pressure	dB (A)	34~44	35~47	36~47
Sound Power	dB (A)	45~55	46~58	47~58
Indoor T ° set-point range	°C	+16~+30	+16~+30	+16~+30
Electrical				
Power Supply (From Outdoor)	V/P/Hz	220~240 / 1 / 50		
Power / Communication Cable	qty/mm	4 x 1.5	4 x 1.5	4 x 1.5
Dimensions and Weights				
Product Length / height / width	mm	596x240x596	596x240x596	840x240x840
Net / gross weight	kg	20	20	26
Façade	mm	670x50x670	670x50x670	950x60x950
Weight	kg	3.5	3.5	7
Installation				
Refrigeration connections	Liquid	6.35 (1/4")	6.35 (1/4")	9.52 (3/8")
	Gas	9.52 (3/8")	12.7 (1/2")	15.88 (5/8")
Drain Connection	mm	-	-	-

# Free Match Outdoor Units

18K



24/28K



36/42K



## Gree Free Match Outdoor Units

- Five different models to choose from
- Connectable from 2 to 5 units
- Wide temperature operation range
- Wide voltage operation range
- Auto restart
- Gree G10 180° Sine Wave Inverter
- Blue Fin / Gold Fin / Black Fin depending on the model

## Outdoor Units Features



# Free Match Outdoor Units



The Gree Free Match R32 multi split series is ideal for residential building and offices, since it allows the installation of up to 5 indoor units, i.e. up to 53 possible combinations with wall splits, cassettes, ducts and consoles to a single outdoor unit.

There are five different outdoor units to choose from, giving even more flexibility in finding the perfect system for your requirements.

Gree Free Match outdoors utilises the company's G10 Inverter technology. The G10 Inverter uses highly sensitive control technology to vary the speed of the air conditioner according to the required set point. When the desired temperature is reached, the G10 Inverter technology guarantees its continuous maintenance while achieving greater energy efficiency.

Gree G10 Inverter has 180° Sine Wave DC Variable Speed technology and this provides more precise control. By producing a smoother sine wave, the G10 Inverter allows for step less regulation of the operating frequency, this means the compressor is less strained, resulting in greater reliability while providing lower sound levels.

Reflecting the varied climate of our nation, the Gree Free match units can operate in cooling from -15°C to 43°C and in heating form -15°C to 24°C .

The Free Match system can operate safely between 160V and 276V, which means voltage variations, are less likely to cause damage. In the case of a power outage, the Gree Free Match will automatically restart with the same mode and settings as before the shutdown.

Our coastal environments can be harsh on outdoor units. To help ward off the challenges the outdoor coils have gold hydrophilic fin coating to assist defrost and to improve corrosion resistance. The chassis is made of zinc coated steel and painted for added resistance and the PCB's have three coats of AUS Guard to offer better moisture protection.

Gree Free Match units come standard with R32 ecological refrigerant, auto defrosts and self-diagnosis program in case it goes wrong. This is all back by Gree's amazing 6-Year parts and labour warranty.

# Outdoor Units Specification

Series		Outdoor Units				
Outdoor Model No.		GWHD(18)NK6PO	GWHD(24)NK6PO	GWHD(28)NK6PO	GWHD(36)NK6PO	GWHD(42)NK6PO
Multi Split System	In/Out	2 x 1	3 x 1	4 x 1	4 x 1	5 x 1
Performance						
Cooling Capacity Output	kW	5.3	7.3	8.2	10.6	12.3
Heating Capacity Output	kW	5.6	8.3	8.8	11.4	12.6
Cooling Power Input	kW	1.38	1.96	1.88	2.65	3.1
Heating Power Input	kW	1.3	2.0	2.12	2.85	3.2
AEER	W/W	3.779	3.673	4.285	3.947	3.92
ACOP	W/W	4.235	4.094	4.086	3.951	3.89
Air Flow	m <sup>3</sup> /hr	2300	3800	3800	5800	5800
Sound Pressure	dB(A)	50(C) / 54(H)	57(C) / 58(H)	58	60	60
Sound Power	dB(A)	64	68	68	70	72(C) / 74(H)
Operating Range in Outdoor T°	Cold (°C)	-15~52	-15~52	-15~52	-15~52	-15~52
	Hot (°C)	-22~24	-22~24	-22~24	-22~24	-22~24
Electrical						
Power Supply (Outdoor)	V/P/Hz	220~240 / 1 / 50				
Recommended Circuit Breaker	A	25			30	
Current Draw	Cold (A)	6.1	8.7	8.3	11.8	13.8
	Hot (A)	5.8	8.9	9.4	12.6	14.2
Communication Cable	m	See Indoor Unit				
Power cable	mm	3 x 1.5	3 x 2.5	3 x 2.5	3 x 4	3 x 4
Dimensions and Weights						
Outdoor Dimensions (WxHxD)	mm	822 x 550 x 352	964 x 660 x 402	964 x 660 x 402	1020 x 826 x 427	1020 x 826 x 427
Outdoor Net Weight	kgs	34	47.5	51	72	73
Clearance Dimensions	mm	Front 2000, back 300, above 500, LHS 300, pipe connection side 500				
Installation						
Refrigeration Connections	Liquid	∅6 x 2	∅6 x 3	∅6 x 4	∅6 x 4	∅6 x 5
	Gas	∅9.52 x 2	∅9.52 x 3	∅9.52 x 4	∅9.52 x 4	∅9.52 x 5
Refrigerant Charge R32	kg	0.9	1.7	1.8	2.4	2.4
Pre-charged Pipe Length	m	40	40	40	40	50
Additional Charge per Metre	g/m	20	20	20	20	20
Maximum length Indoor Unit	m	50	60	70	80	100
Maximum Total Length (UI / EU)	m	30	30	30	30	30
Maximum Height Difference	m	15	15	15	25	25

The technical specifications of the product may differ from the stated values according to product development by the manufacturer. Please refer to the parameters on the nameplate

# Unit Combinations

## Line Up

Model	7 (2.25)	9 (2.5)	12 (3.5)	15 (4.6)	18 (5.2)	21 (6.1)	24 (7.1)
Hyper HW		•	•	•	•	•	•
Pular HW	•	•	•		•	•	•
Alto HW		•	•		•		•
Ducted (mid/stat)		•	•		•		•
Cassette			•		•		•
Mini Floor					•		

## Gree Free Match R32 Connection Combinations

The allowance for indoor connections is very flexible, but there are some recommendations to follow. The allowable connections for any outdoor unit are based on a minimum of 50% cooling capacity up to a maximum of 150% cooling capacity. However, please be aware that certain connections, while within the design parameters may produce undesirable performance. For that reason we do not recommend using an indoor unit rated at the same capacity as the outdoor unit e.g. an 18 indoor with an 18 outdoor. Or using a 21 or 24 indoor unit on a 24 or 28 outdoor unit.

### 8 Combinations



FM18	
2 Units	
7 + 7	9 + 9
7 + 9	9 + 12
7 + 12	9 + 15
7 + 15	12 + 12

### 33 Combinations



FM24			
2 Units		3 Units	
7 + 7	12 + 12	7 + 7 + 7	7 + 12 + 12
7 + 9	12 + 15	7 + 7 + 9	7 + 12 + 15
7 + 12	12 + 18	7 + 7 + 12	9 + 9 + 9
7 + 15	15 + 15	7 + 7 + 15	9 + 9 + 12
7 + 18	15 + 18	7 + 7 + 18	9 + 9 + 15
9 + 9	18 + 18	7 + 9 + 9	9 + 9 + 18
9 + 12		7 + 9 + 12	9 + 12 + 12
9 + 15		7 + 9 + 15	9 + 12 + 15
9 + 18		7 + 9 + 18	12 + 12 + 12

### 56 Combinations



FM28					
2 Units		3 Units		4 Units	
7 + 7	12 + 18	7 + 7 + 7	7 + 12 + 18	7 + 7 + 7 + 7	7 + 9 + 9 + 9
7 + 9	15 + 15	7 + 7 + 9	9 + 9 + 9	7 + 7 + 7 + 9	7 + 9 + 9 + 12
7 + 12	15 + 18	7 + 7 + 12	9 + 9 + 12	7 + 7 + 7 + 12	7 + 9 + 9 + 15
7 + 15	18 + 18	7 + 7 + 15	9 + 9 + 15	7 + 7 + 7 + 15	9 + 9 + 9 + 9
7 + 18		7 + 7 + 18	9 + 9 + 18	7 + 7 + 7 + 18	9 + 9 + 9 + 12
9 + 9		7 + 9 + 9	9 + 12 + 12	7 + 7 + 9 + 9	9 + 9 + 9 + 15
9 + 12		7 + 9 + 12	9 + 12 + 15	7 + 7 + 9 + 12	9 + 9 + 12 + 12
9 + 15		7 + 9 + 15	9 + 12 + 18	7 + 7 + 9 + 15	
9 + 18		7 + 9 + 18	12 + 12 + 12	7 + 7 + 9 + 18	
12 + 12		7 + 12 + 12	12 + 12 + 15	7 + 7 + 12 + 12	
12 + 15		7 + 12 + 15	12 + 12 + 18	7 + 7 + 12 + 15	

### 160 Combinations



FM36							
2 Units		3 Units		4 Units			
7 + 12	21 + 21	7 + 7 + 7	7 + 18 + 21	9 + 21 + 24	7 + 7 + 7 + 7	7 + 7 + 18 + 21	9 + 9 + 9 + 15
7 + 15	21 + 24	7 + 7 + 9	7 + 18 + 24	12 + 12 + 12	7 + 7 + 7 + 9	7 + 9 + 9 + 9	9 + 9 + 9 + 18
7 + 18	24 + 24	7 + 7 + 12	7 + 21 + 21	12 + 12 + 15	7 + 7 + 7 + 12	7 + 9 + 9 + 12	9 + 9 + 9 + 21
7 + 21		7 + 7 + 15	7 + 21 + 24	12 + 12 + 18	7 + 7 + 7 + 15	7 + 9 + 9 + 15	9 + 9 + 9 + 24
7 + 24		7 + 7 + 18	9 + 9 + 9	12 + 12 + 21	7 + 7 + 7 + 18	7 + 9 + 9 + 18	9 + 9 + 12 + 12
9 + 9		7 + 7 + 21	9 + 9 + 12	12 + 12 + 24	7 + 7 + 7 + 21	7 + 9 + 9 + 21	9 + 9 + 12 + 15
9 + 12		7 + 7 + 24	9 + 9 + 15	12 + 15 + 15	7 + 7 + 7 + 24	7 + 9 + 9 + 24	9 + 9 + 12 + 18
9 + 15		7 + 9 + 9	9 + 9 + 18	12 + 15 + 18	7 + 7 + 9 + 9	7 + 9 + 12 + 12	9 + 9 + 12 + 21
9 + 18		7 + 9 + 12	9 + 9 + 21	12 + 15 + 21	7 + 7 + 9 + 12	7 + 9 + 12 + 15	9 + 9 + 12 + 24
9 + 21		7 + 9 + 15	9 + 9 + 24	12 + 15 + 24	7 + 7 + 9 + 15	7 + 9 + 12 + 18	9 + 9 + 15 + 15
9 + 24		7 + 9 + 18	9 + 12 + 12	12 + 18 + 18	7 + 7 + 9 + 18	7 + 9 + 12 + 21	9 + 9 + 15 + 18
12 + 12		7 + 9 + 21	9 + 12 + 15	12 + 18 + 21	7 + 7 + 9 + 21	7 + 9 + 12 + 24	9 + 9 + 15 + 21
12 + 15		7 + 9 + 24	9 + 12 + 18	12 + 18 + 24	7 + 7 + 9 + 24	7 + 9 + 15 + 15	9 + 9 + 18 + 18
12 + 18		7 + 12 + 12	9 + 12 + 21	12 + 21 + 21	7 + 7 + 12 + 12	7 + 9 + 15 + 18	9 + 12 + 12 + 12
12 + 21		7 + 12 + 15	9 + 12 + 24	15 + 15 + 15	7 + 7 + 12 + 15	7 + 9 + 15 + 21	9 + 12 + 12 + 15
12 + 24		7 + 12 + 18	9 + 15 + 15	15 + 15 + 18	7 + 7 + 12 + 18	7 + 9 + 18 + 18	9 + 12 + 12 + 18
15 + 15		7 + 12 + 21	9 + 15 + 18	15 + 15 + 21	7 + 7 + 12 + 21	7 + 12 + 12 + 12	9 + 12 + 12 + 21
15 + 18		7 + 12 + 24	9 + 15 + 21	15 + 15 + 24	7 + 7 + 12 + 24	7 + 12 + 12 + 15	9 + 12 + 15 + 15
15 + 21		7 + 15 + 15	9 + 15 + 24	18 + 18 + 18	7 + 7 + 15 + 15	7 + 12 + 12 + 18	9 + 12 + 15 + 18
15 + 24		7 + 15 + 18	9 + 18 + 18		7 + 7 + 15 + 18	7 + 12 + 12 + 21	12 + 12 + 12 + 12
18 + 18		7 + 15 + 21	9 + 18 + 21		7 + 7 + 15 + 21	7 + 15 + 15 + 15	12 + 12 + 12 + 15
18 + 21		7 + 15 + 24	9 + 18 + 24		7 + 7 + 15 + 24	9 + 9 + 9 + 9	12 + 12 + 12 + 18
18 + 24		7 + 18 + 18	9 + 21 + 21		7 + 7 + 18 + 18	9 + 9 + 9 + 12	12 + 12 + 15 + 15

# Unit Combinations

## Line Up

### 309 Combinations



FM42							
2 Units		3 Units		4 Units			
7+15	7+7+7	9+9+9	12+15+24	7+7+7+7	7+9+9+9	7+15+15+18	9+12+12+18
7+18	7+7+9	9+9+12	12+18+18	7+7+7+9	7+9+9+12	7+15+15+21	9+12+12+21
7+21	7+7+12	9+9+15	12+18+21	7+7+7+12	7+9+9+15	7+15+15+24	9+12+12+24
7+24	7+7+15	9+9+18	12+18+24	7+7+7+15	7+9+9+18	7+15+18+18	9+12+15+15
9+12	7+7+18	9+9+21	12+21+21	7+7+7+18	7+9+9+21	7+15+18+21	9+12+15+18
9+15	7+7+21	9+9+24	15+15+15	7+7+7+21	7+9+9+24	7+18+18+18	9+12+15+21
9+18	7+7+24	9+12+12	15+15+18	7+7+7+24	7+9+12+12	9+9+9+9	9+12+15+24
9+21	7+9+9	9+12+15	15+15+21	7+7+9+9	7+9+12+15	9+9+9+12	9+12+18+18
9+24	7+9+12	9+12+18	15+15+24	7+7+9+12	7+9+12+18	9+9+9+15	9+12+18+21
12+12	7+9+15	9+12+21	18+18+18	7+7+9+15	7+9+12+21	9+9+9+18	9+12+18+24
12+15	7+9+18	9+12+24	18+18+21	7+7+9+18	7+9+12+24	9+9+9+21	9+12+21+21
12+18	7+9+21	9+15+15	18+18+24	7+7+9+21	7+9+15+15	9+9+9+24	9+18+18+18
12+21	7+9+24	9+15+18	18+21+21	7+7+9+24	7+9+15+18	9+9+12+12	12+12+12+12
12+24	7+12+12	9+15+21	18+21+24	7+7+12+12	7+9+15+21	9+9+12+15	12+12+12+15
15+18	7+12+15	9+15+24	21+21+21	7+7+12+15	7+9+15+24	9+9+12+18	12+12+12+18
15+21	7+12+18	9+18+18		7+7+12+18	7+9+18+18	9+9+12+21	12+12+12+21
15+24	7+12+21	9+18+21		7+7+12+21	7+9+21+21	9+9+12+24	12+12+12+24
18+18	7+12+24	9+18+24		7+7+12+24	7+9+21+24	9+9+15+15	12+12+15+18
18+21	7+15+15	9+21+21		7+7+15+15	7+12+12+12	9+9+15+18	12+12+15+21
18+24	7+15+18	9+21+24		7+7+15+18	7+12+12+15	9+9+15+21	12+12+15+24
21+21	7+15+21	12+12+12		7+7+15+21	7+12+12+18	9+9+15+24	12+12+18+18
21+24	7+15+24	12+12+15		7+7+15+24	7+12+12+21	9+9+18+18	12+12+18+21
24+24	7+18+18	12+12+18		7+7+18+18	7+12+12+24	9+9+18+21	12+15+15+15
	7+18+21	12+12+21		7+7+18+21	7+12+18+18	9+9+18+24	12+15+15+18
	7+18+24	12+12+24		7+7+18+24	7+12+18+21	9+9+21+21	12+15+15+21
	7+21+21	12+15+15		7+7+21+21	7+12+18+24	9+9+21+24	15+15+15+15
	7+21+24	12+15+18		7+7+21+24	7+12+21+21	9+12+12+12	15+15+15+18
	7+24+24	12+15+21		7+7+24+24	7+15+15+15	9+12+12+15	

FM42			
5Units			
7+7+7+7+7	7+7+9+9+15	7+9+9+9+15	9+9+9+9+21
7+7+7+7+9	7+7+9+9+18	7+9+9+9+18	9+9+9+9+24
7+7+7+7+12	7+7+9+9+21	7+9+9+9+21	9+9+9+12+12
7+7+7+7+15	7+7+9+9+24	7+9+9+9+24	9+9+9+12+15
7+7+7+7+18	7+7+9+12+12	7+9+9+12+12	9+9+9+12+18
7+7+7+7+21	7+7+9+12+15	7+9+9+12+15	9+9+9+12+21
7+7+7+7+24	7+7+9+12+18	7+9+9+12+18	9+9+9+12+24
7+7+7+9+9	7+7+9+12+21	7+9+9+12+21	9+9+9+15+15
7+7+7+9+12	7+7+9+12+24	7+9+9+12+24	9+9+9+15+18
7+7+7+9+15	7+7+9+15+15	7+9+9+15+15	9+9+9+15+21
7+7+7+9+18	7+7+9+15+18	7+9+9+15+18	9+9+9+18+18
7+7+7+9+21	7+7+9+15+21	7+9+9+15+21	9+9+12+12+12
7+7+7+9+24	7+7+9+15+24	7+9+9+18+18	9+9+12+12+15
7+7+7+12+12	7+7+9+18+18	7+9+12+12+12	9+9+12+12+18
7+7+7+12+15	7+7+9+18+21	7+9+12+12+15	9+9+12+12+21
7+7+7+12+18	7+7+12+12+12	7+9+12+12+18	9+12+12+12+12
7+7+7+12+21	7+7+12+12+15	7+9+12+12+21	9+12+12+12+15
7+7+7+12+24	7+7+12+12+18	7+9+12+15+15	9+12+12+12+18
7+7+7+15+15	7+7+12+12+21	7+9+12+15+18	12+12+12+12+12
7+7+7+15+18	7+7+12+12+24	7+9+15+15+15	12+12+12+12+15
7+7+7+15+21	7+7+12+15+15	7+12+12+12+12	
7+7+7+15+24	7+7+12+15+18	7+12+12+12+15	
7+7+7+18+18	7+7+12+15+21	7+12+12+12+18	
7+7+7+18+21	7+7+12+18+18	7+12+12+15+15	
7+7+7+18+24	7+7+15+15+15	9+9+9+9+9	
7+7+7+21+21	7+7+15+15+18	9+9+9+9+12	
7+7+9+9+9	7+9+9+9+9	9+9+9+9+15	
7+7+9+9+12	7+9+9+9+12	9+9+9+9+18	



# Free Match Features Reference Guide



## Wifi Control

Achieve long-distance control of unit on and off, temperature and fan speed, etc. by APP in the mobile phone and wifi.



## -15°C Cooling

Cooling operation to -15°C ambient.



## Smart Defrost

Optimised defrost time management.



## Turbo Function

To run with strong power and make you feel comfortable (cool or warm) quickly.



## Easier Maintainability

The unit is designed to be easier for maintenance and component replacement.



## Preheat Function

Prevents cold air after a defrost cycle.



## 8°C Heating Mode

Frost prevention in low ambient areas.



## Low Voltage Startup

Allows activation in areas where the voltage is not stable.



## Multi Fan Speeds

Indoor units come with multi speed fans for greater comfort.



## 24 Hour Timer

Programmable on/off times.



## Wide Voltage Range

The unit operates in a wide voltage range.



## Optimised Air Outlet

The air outlet is automatically directed for heating and cooling.



## I-Feel

The infrared remote acts as the temperature sensor.



## Intelligent Auto-Restart

After a power failure, the unit will restart in the same mode.



## Intelligent Auto-Restart

The indoor fan continues to operate to eliminate condensation before shutting down.



## LED Display

LED display can display clearly in front of a light source.



## Energy Saving Function

When this function is activated, the temperature setting is only in limited range, so as to save energy.



## Mini Filters

These purify the air by absorbing odors, impurities, bacteria and dust mites.



## Automatic Operation

The unit automatically switches between heating or cooling.



## Easier Maintainability

The unit is designed to be easier for maintenance and component replacement.



## 3D Airflow

Optimizes the air outlet of the indoor unit through the vertical & horizontal swing.



## Child Lock

Locks the functions on the remote or wired controller.



## Quiet Function

Technology helps reduce the level of noise without affecting the comfort level.



## ION Generator

Eliminates more than 90% of bacteria, viruses and mold spores.



## Sleep Modes

Automatically adjusts ventilation and Room temperature to promote sleep.



## Compact Design

The small dimensions of the unit allow for easier installation in small spaces.



## Dehumidification

Ambient moisture is removed by drying, creating a higher level of comfort.



## Copper Tube with Inner Grooves

Grooves in the inner copper tube improve the heat exchange performance.



## Comprehensive Protection

The unit is designed with various of protection functions to ensure the reliability.



## All DC Inverter Technology

All motors adopt DC inverter technology, which greatly improves energy efficiency.



## Easier Maintainability

The unit is designed to be easier for maintenance and component replacement.



## Gold Fin

High-performance anti-corrosion coating in the heat exchanger prolongs the service life of the unit.



## Self-diagnosis

The system constantly monitors the indoor and outdoor units and displays an error code if necessary.



## Compatible Mono and Multi

Compatible unit for single and multi split installations.



## Key-card Control

It is specially designed for the hotel rooms. By removing the key-card, the air conditioner can be automatically switched to stand-by status.



## X-Fan

The cross fan continuous to blow to dry the inner side of indoor unit when the unit is turned off for keeping it clean and healthy.



## Pre Heat

The unit is designed to be easier for maintenance and component replacement.



## Air Flow

The dehumidifier has the function of air flow, you can enjoy the dry and cool life at the same time.



## 3DC Inverter

3DC inverter includes DC inverter compressor, high chamber and high-efficient DC motor, with superior performance.



## Clock Display

Time is shown on the remote controller.



## 6 Year Warranty

Six Year, Parts and Labour Warranty.



## Control Box

A fire proof control box.



## 3 Layers

The outdoor PCB has been treated with 3 layers of a flexible coating to protect against moisture and environmental attack



## R32 Refrigerant

A 68% lower Global Warming Potential. It has superior energy efficiency, a higher refrigeration capacity, thermal conductivity and low refrigerant charge.



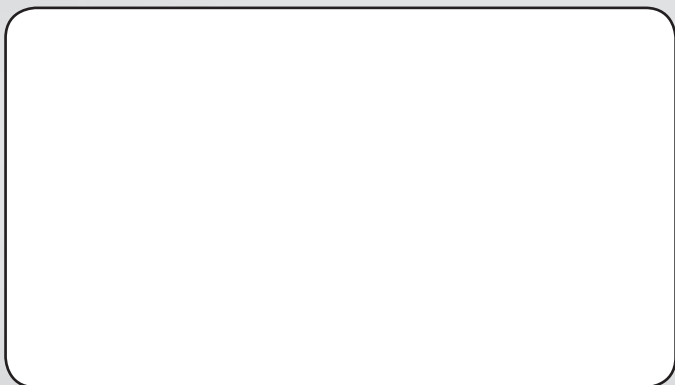
## Wired Remote Control

This unit is compatible with a wired remote control. (Optional)





For Installation and Sales:



For Parts and Warranty:



[www.greeac.com.au](http://www.greeac.com.au)

**1800 GREE 4 ME**  
1800 4733 4 63

GREEFREE-MATCHAIRCONDITIONERS-0424